

Fig 1. Tumor cells

Fig 2. Strong positivity for p16^{INK4a} in cytoplasm and nuclei.

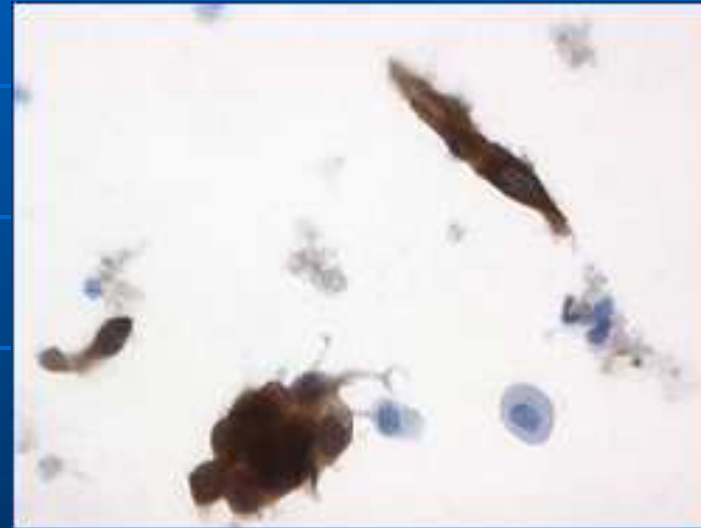
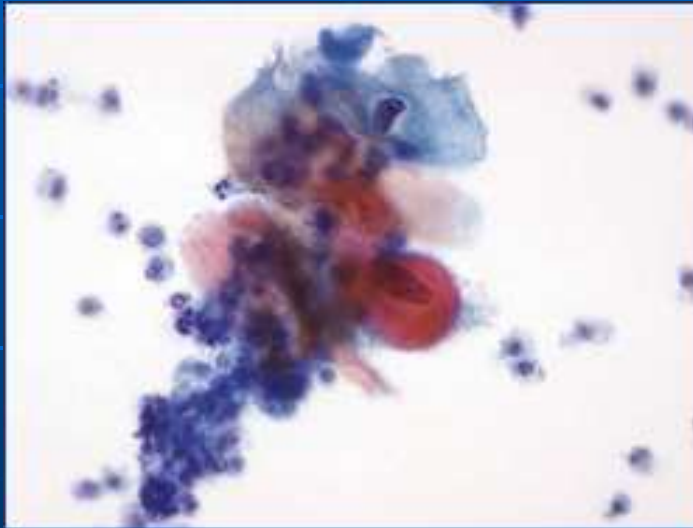


Fig 1. Tumor cells, endocervical

Fig 2. Strong positivity for p16^{INK4a} in cytoplasm and nuclei.

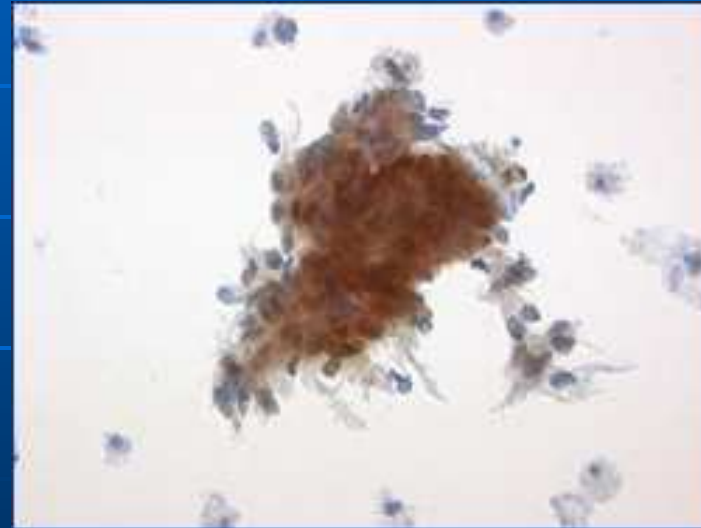


Fig 1. Cells from Cin III (HSIL, Pap IV)

Fig 2. Strong positivity for p16^{INK4a} in cytoplasm and nuclei.

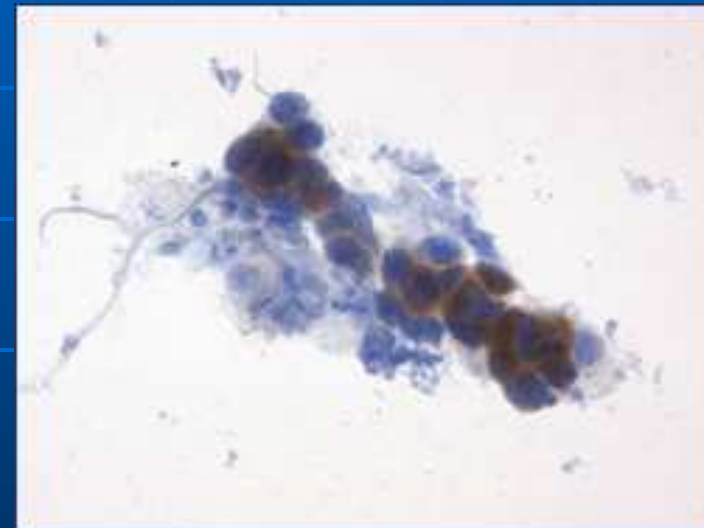
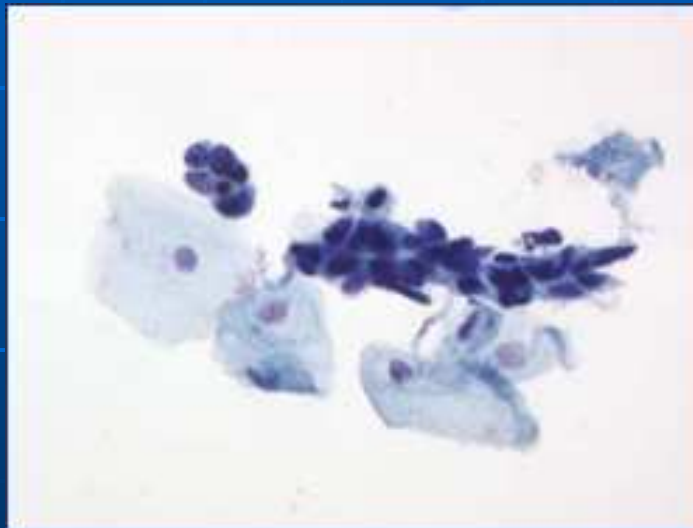


Fig 1. Dysplastic cells from severe dysplasia (HSIL, Pap IVa)
Fig 2. Strong positivity for p16^{INK4a} in cytoplasm and nuclei.

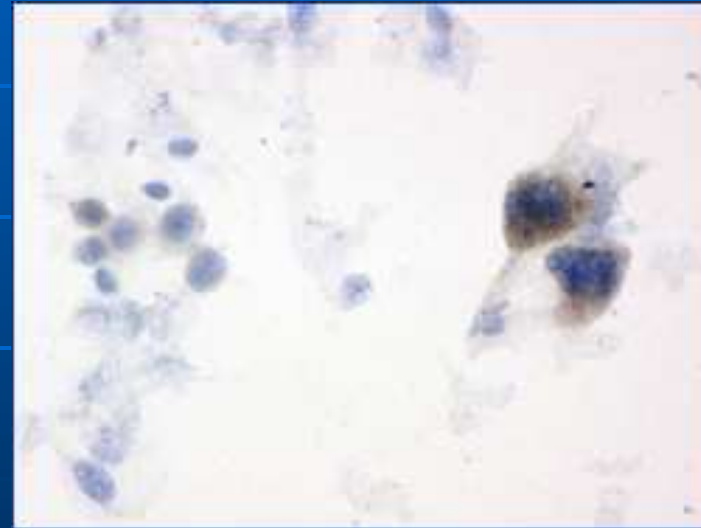
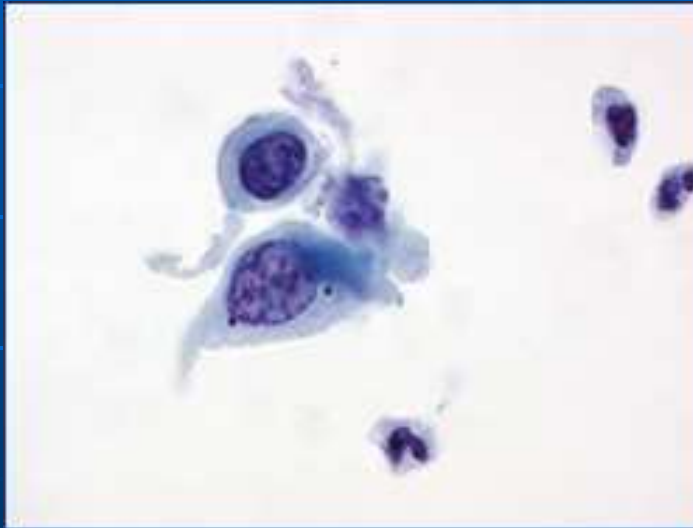


Fig 1. Cells from CIN II

Fig 2. Strong positivity for p16^{INK4a} in cytoplasm and nuclei.

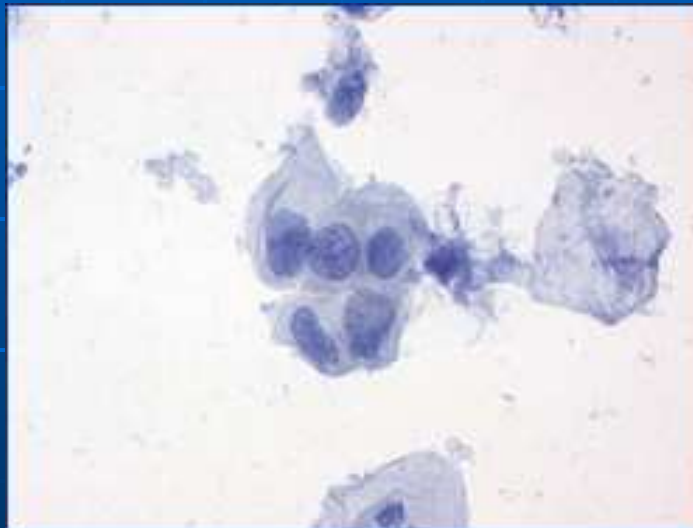


Fig 1. Koilocytes

Fig 2. No staining reaction for p16^{INK4a}

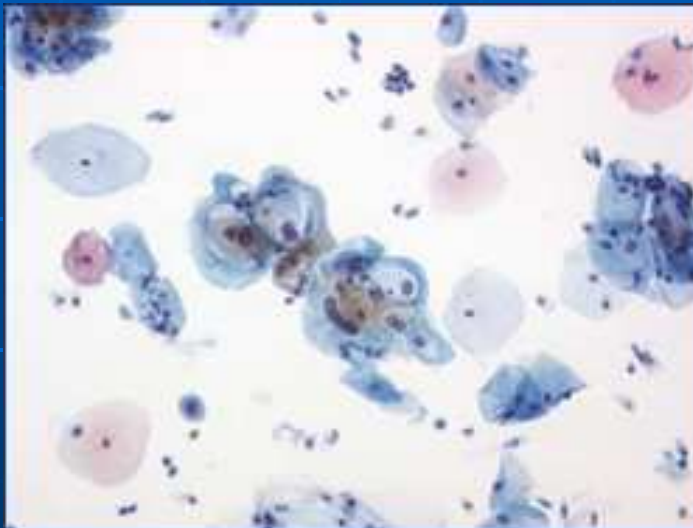


Fig 1. Superficial cells from stratified squamous epithelium

Fig 2. No staining reaction for p16^{INK4a}

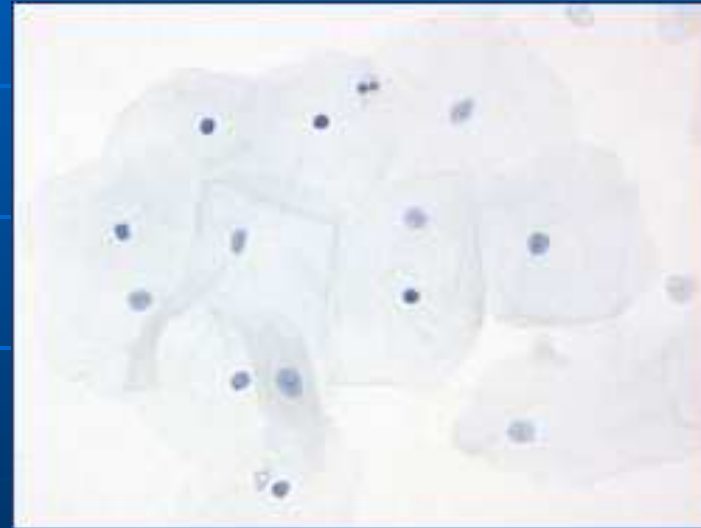


Fig 1. Intermediate cells from stratified squamous epithelium

Fig 2. No staining reaction for p16^{INK4a}

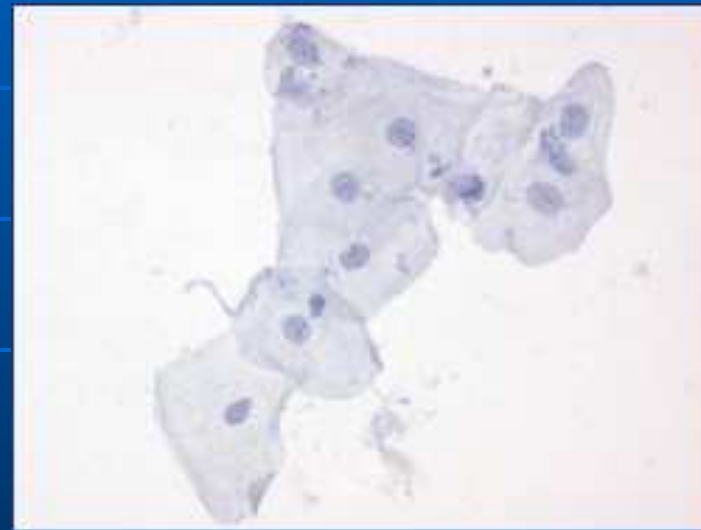


Fig 1. Parabasal cells from stratified squamous epithelium

Fig 2. No staining reaction for p16^{INK4a}

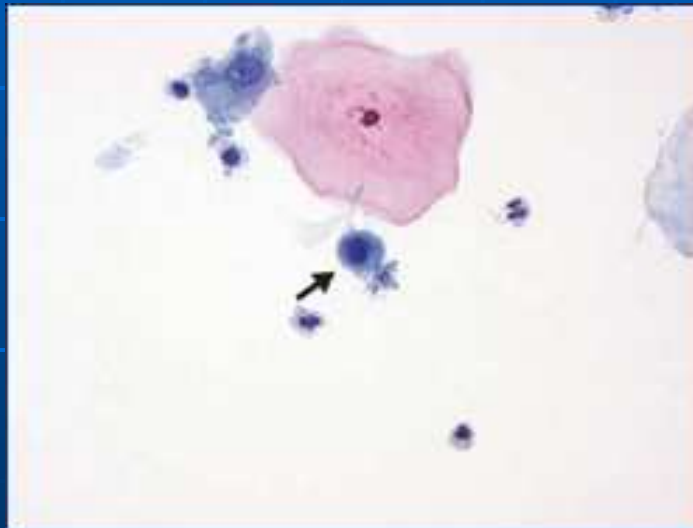


Fig 1. **Cells from ectocervical atrophy**

Fig 2. Negative for p16^{INK4a} with occasional positive cells in superficial layers

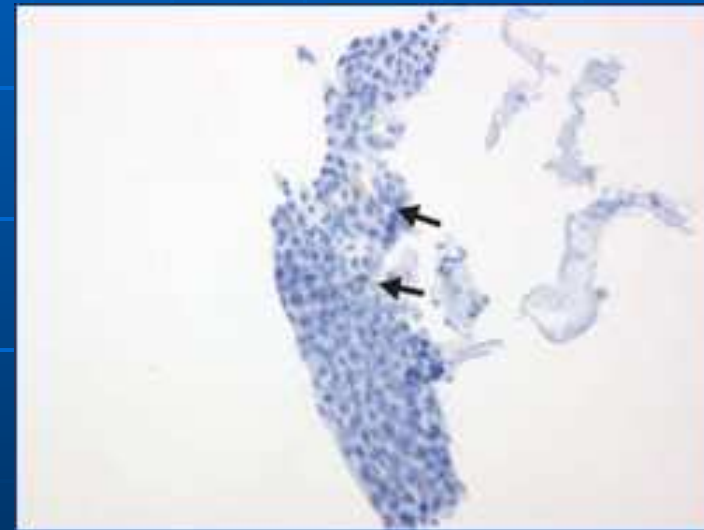
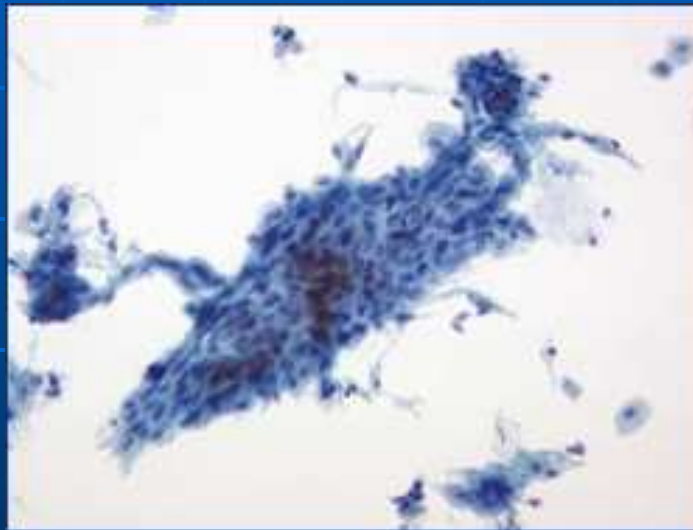


Fig 1. Columnar cells from endocervical epithelium

Fig 2. occasionally a positive p16^{INK4a} reaction in cytoplasm and nuclei of columnar cells

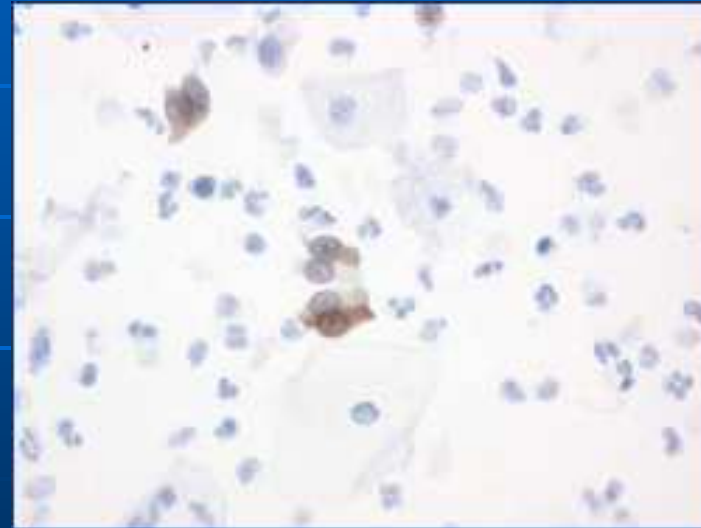
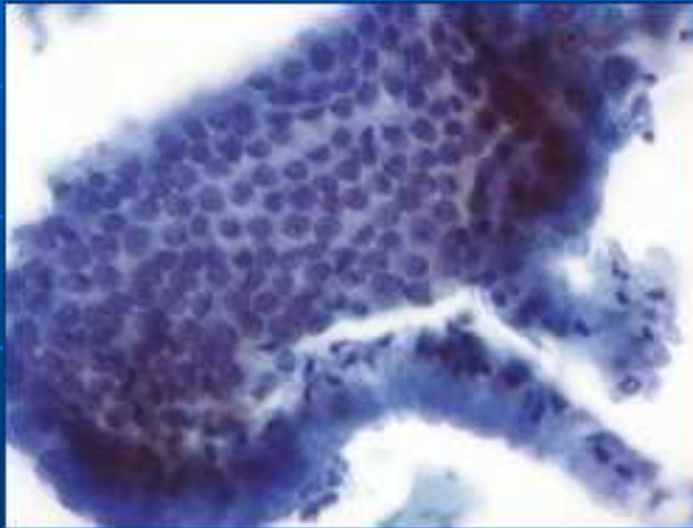


Fig 1. Cluster of endometrial cells
Fig 2. Single cells positive for p16^{INK4a}.

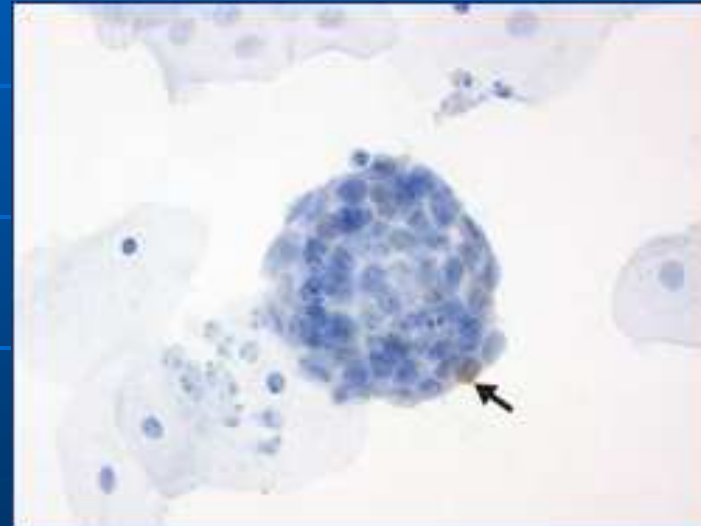
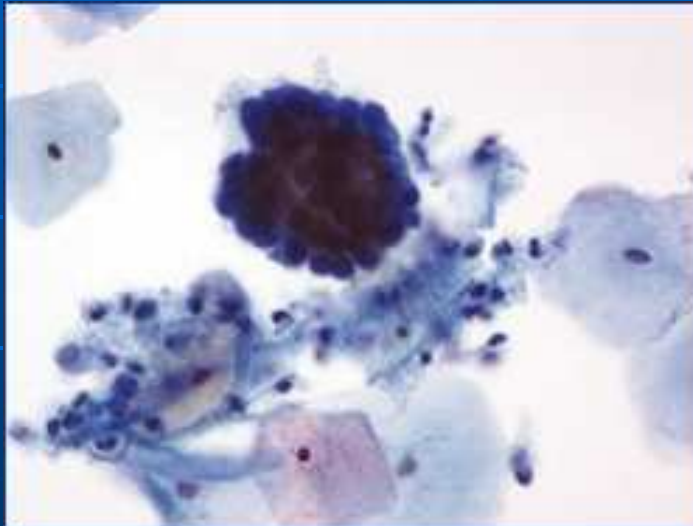


Fig 1. **Neutrophil granulocytes**
Fig 2. **Negative for p16^{INK4a}.**

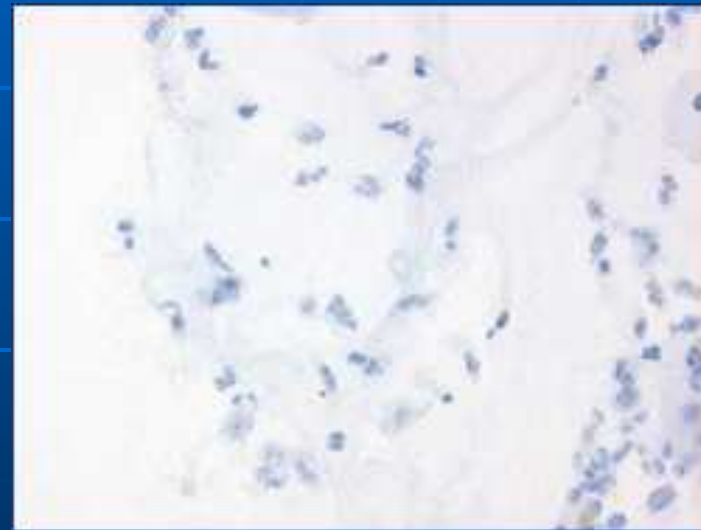
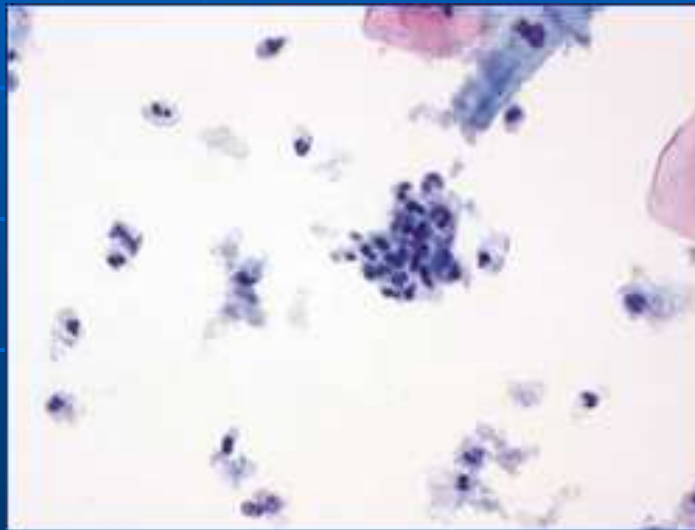


Fig 1. Histiocytes
Fig 2. Negative for p16^{INK4a}.

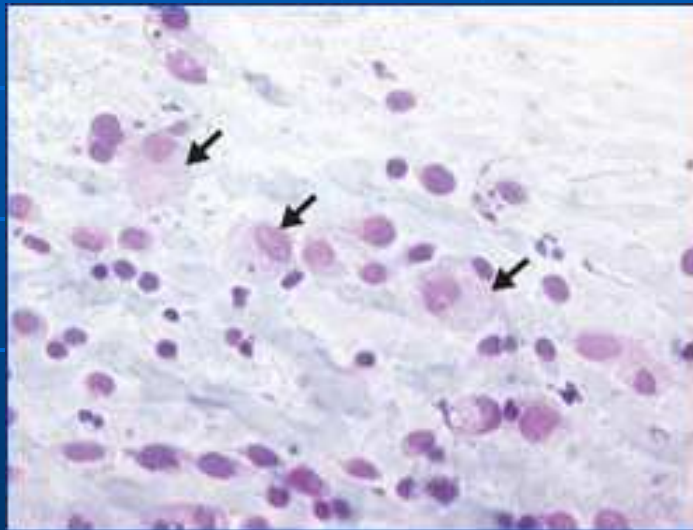


Fig 1. Bacteria
Fig 2. Positive for p16^{INK4a}.

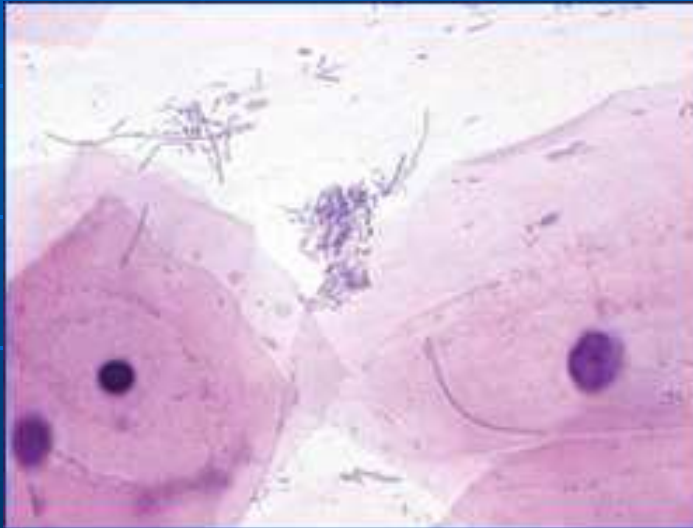


Fig 1. *Candida albicans*
Fig 2. Negative for p16^{INK4a}.

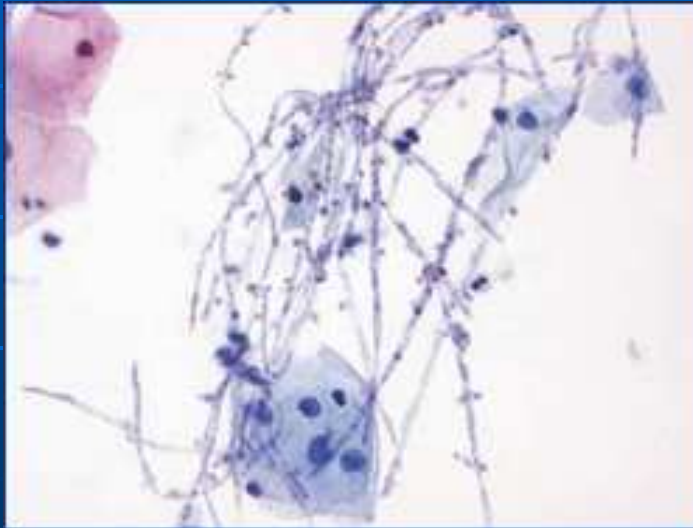


Fig 1. Trichomoniasis
Fig 2. Negative for p16^{INK4a}.

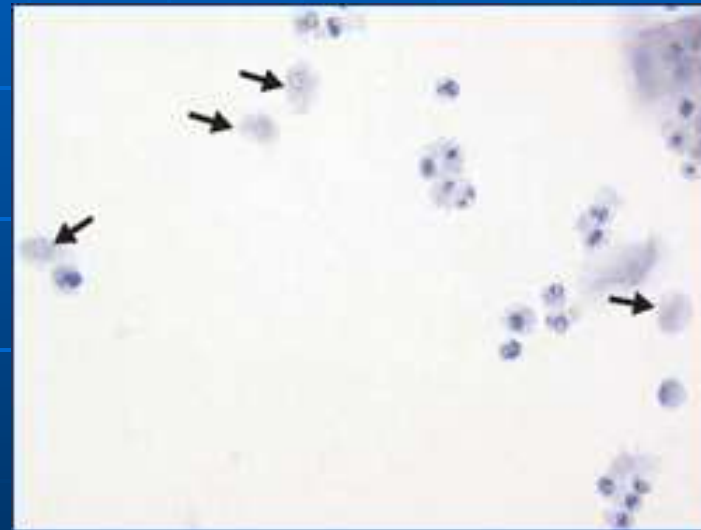
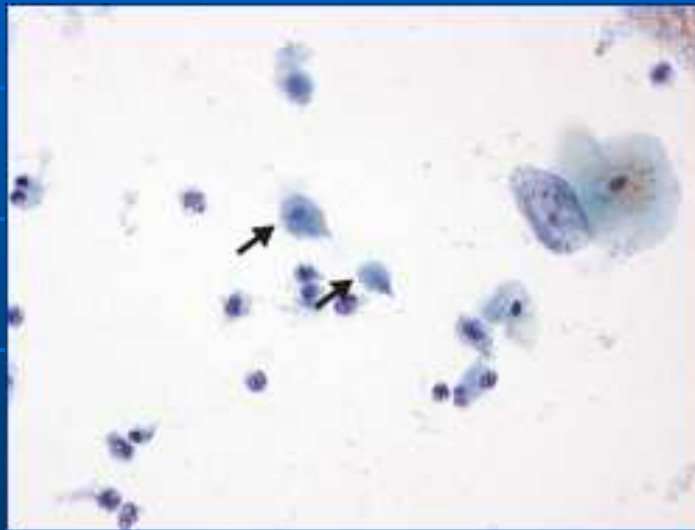


Fig 1. Cells from immature metaplasia and normal endocervical cells

Fig 2. Negative for p16^{INK4a}.

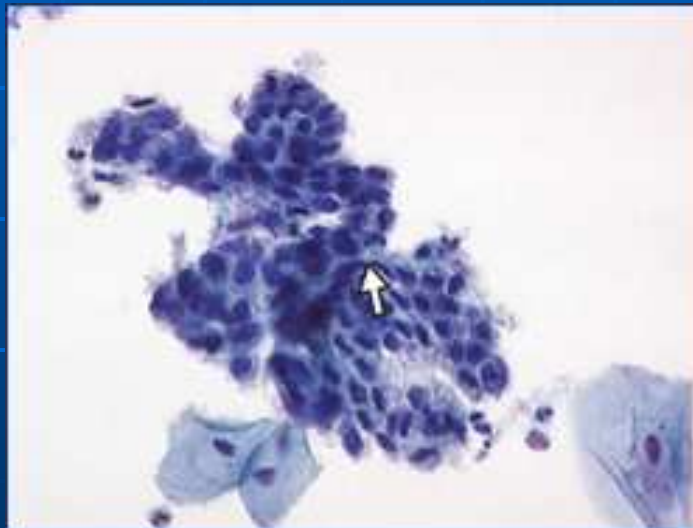


Fig 1. Maturing squamous cell metaplasia / tissue repair
Fig 2. positivity for p16^{INK4a} in some cells

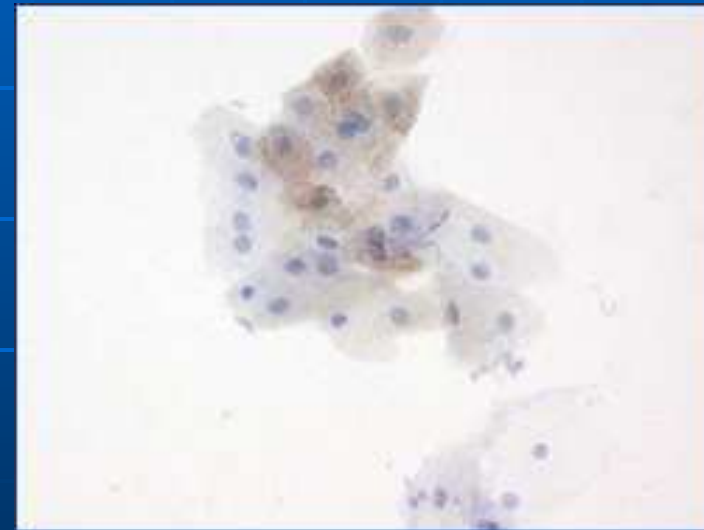
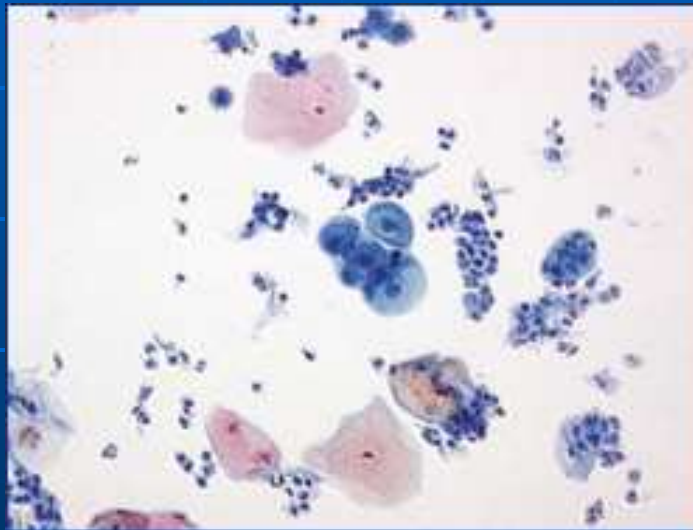


Fig 1. Tubal metaplasia

Fig 2. positivity for p16^{INK4a} in some cells

