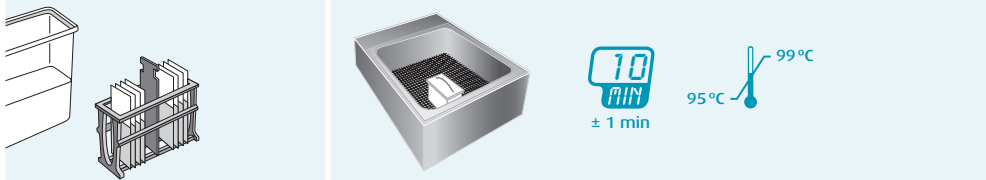
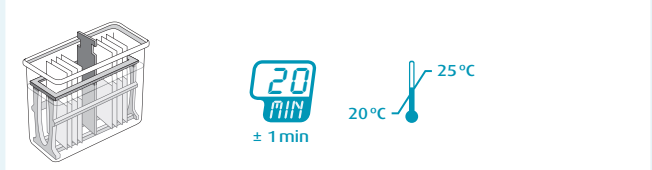
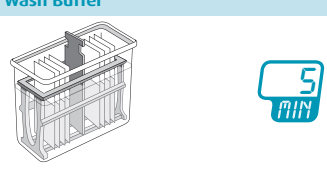


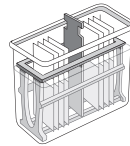


## Automated Procedure for the Autostainer/Autostainer Plus

	LBC slides	96% Ethanol for at least 10 min to maximum 24 h, air-dry for at least 20 min to maximum 12 h.
	Conventional smears	Spray fixation
	Rehydration	All slides for 10 minutes into a 50% (v/v) ethanol bath, then tap off excess liquid and place slides in deionized or distilled water for a minimum of 30 seconds for rehydration.
1	Epitope Retrieval Solution (Vial 6) in water bath at 95–99 °C	
2	Cool down in Epitope Retrieval Solution at room temperature 20–25 °C	
		
3	Insert slides into the Autostainer/Autostainer Plus	<p><b>These steps are performed in the Autostainer/Autostainer Plus</b></p> <ul style="list-style-type: none"> <li>• Rinse with Wash Buffer</li> <li>• 200 µL Peroxidase-Blocking Reagent (Vial 1) (ready-to-use) – 5 minutes</li> <li>• Rinse with Wash Buffer</li> <li>• 200 µL Mouse Anti-Human p16<sup>INK4a</sup> Antibody (Vial 2) (ready-to-use) – 30 minutes</li> <li>• Rinse with Wash Buffer</li> <li>• 200 µL Visualization Reagent (Vial 3) (ready-to-use) – 30 minutes</li> <li>• Rinse with Wash Buffer three times</li> <li>• Switch</li> <li>• 200 µL Substrate-Chromogen Solution (DAB) – 5 minutes</li> <li>• Rinse with Wash Buffer</li> <li>• 200 µL Substrate-Chromogen Solution (DAB) – 5 minutes</li> <li>• Rinse with deionized water</li> </ul>
	Prepare Substrate-Chromogen Solution (DAB) outside the instrument: One drop of Vial 5 per 2 mL of Vial 4	
4	Counterstaining	<p><b>Counterstain with hematoxylin.</b></p> <p>After counterstaining in case of blueing rinse with running tap water.</p> 
5	Mounting	Permanent Mounting Medium is recommended.
6	Storage	Store slides in a dark room.
		
<p>Note: 20–25 °C = 68–77 °F and 95–99 °C = 203–210 °F</p>		
<p><b>CINtec® Cytology Kit</b>      Package Size: 50      Order No.: 9521</p>		

Wash Buffer

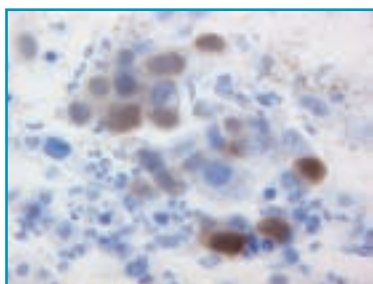


**Additional reagents required**

- CINtec® Wash Buffer (10x) Order No. 8550 (provided) (for manual and Autostainer/Autostainer Plus use)
- Hematoxylin (not provided)
- Permanent Mounting Medium (not provided)

CINtec® Cytology Kit, in combination with the Pap test, may provide a useful adjunct for your clarification of difficult cases:

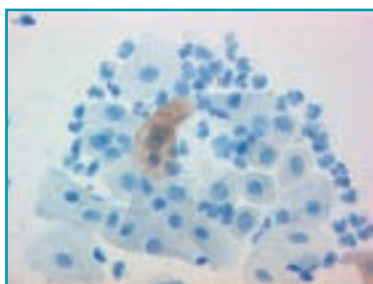
- ASC-US Cases
- LSIL Cases
- ASC-H Cases
- Repeat cytology
- Glandular abnormalities



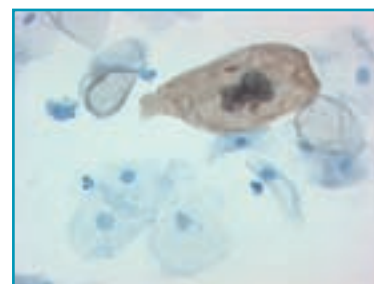
HSIL, p16<sup>INK4a</sup> positive  
(conv. smear)



HSIL, p16<sup>INK4a</sup> positive  
(liquid based cytology)



LSIL, p16<sup>INK4a</sup> positive  
(conv. smear)



LSIL, p16<sup>INK4a</sup> positive  
(liquid based cytology)

The CINtec® Cytology Kit is an immunocytochemistry assay for the qualitative detection of the p16<sup>INK4a</sup> antigen on cervical cytology preparations. The kit is intended to be used in medical cytology laboratories. Interpretation of the test results may only be made by a certified professional in conjunction with the patient's clinical history and additional diagnostic tests that have been performed.

#### For more information:

mtm laboratories AG · Im Neuenheimer Feld 583 · 69120 Heidelberg · Germany  
Tel.: +49(0)6221 64966-0 · Fax: +49(0)6221 64966-10 · [www.mtmlabs.com](http://www.mtmlabs.com)